

**ZONE 1**

Turning Basin to Five Mile Beacon

**Pollution Reports**

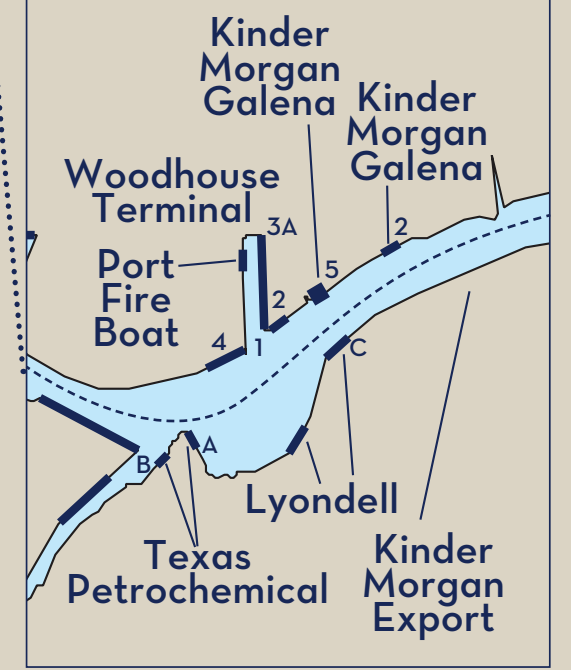
Report all spills of oil and hazardous substances to the National Response Center via 800.424.8802 (toll free), and the nearest U.S. Coast Guard facility VTS 281.464.4837, (33 CFR 153), and Texas General Land Office 800.832.8224.

**Tides**

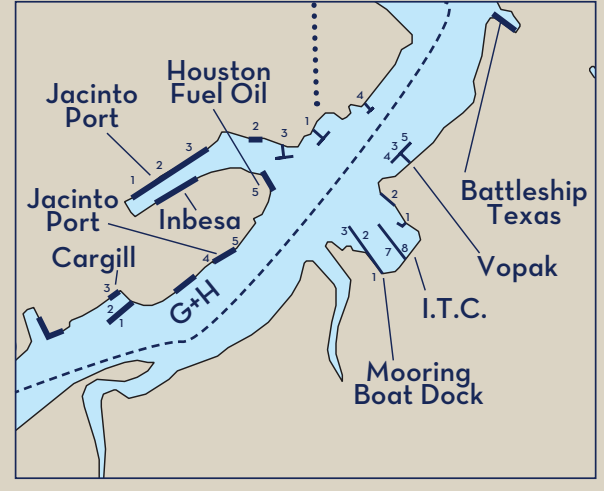
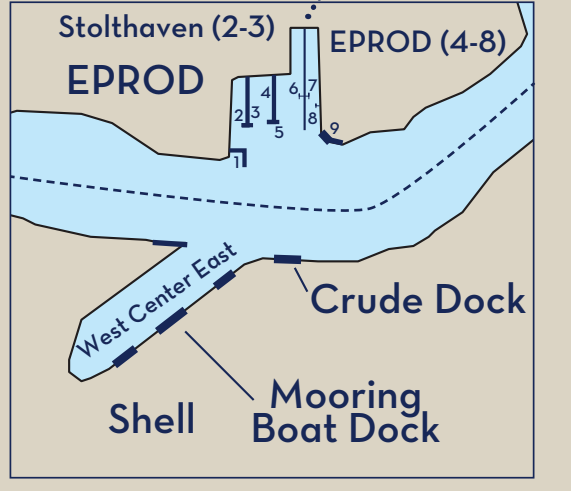
The diurnal tide is about one foot. Southeasterly wind raises the water level by about one to two feet whereas Northwesterly winds reduces the water level by about one to two feet depending on the velocity of the wind.



**ZONE 2**



**ZONE 3**

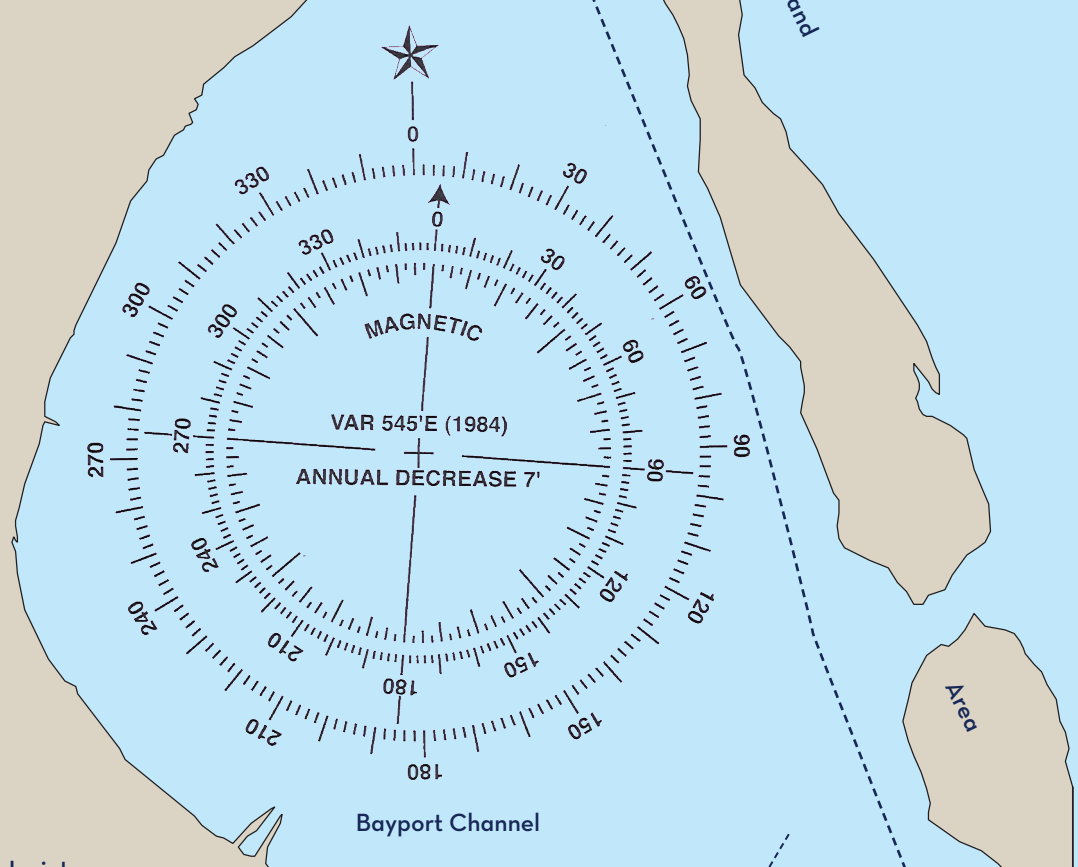


**ZONE 4**

**ZONE 5**

**Project Depth for Houston is:**

- 45 feet/13.72 meters up to Shell Oil Tanking
- 40 feet/12.19 meters up to S.P. Slip
- 36 feet/10.97 meters to the Turning Basin
- 40 feet/12.19 meters Barbour's Cut Channel
- 40 feet/12.19 meters Bayport Channel



**Transit Times**

Sea Buoy to Bayport	2 Hr.
Bayport to Morgans Point	1 Hr.
Sea Buoy to Morgans Point	3 Hr.
Deep Draft*	3.5 Hr.
Point to ITC	1 Hr.
Deep Draft*	1.5 Hr.
Point to Cargill (turn at Shell)	1.75 Hr.
Point to Shell / Oil Tanking	1.25 Hr.
Deep Draft*	1.75 Hr.
Point to Targa / Magellan	1.75 Hr.
Deep Draft*	2.5 Hr.
Point to Lyondell	2 Hr.
Deep Draft*	3.25 Hr.
Point to Turning Basin	2.5 Hr.
Deep Draft*	4 Hr.

\*Deep Draft = 35'+plus



Texas Mooring LLC  
 621 Lakeside Drive • Channelview, Texas 77530 • texmoor.com  
 Phone 281.452.3379 • Direct 281.452.3175 • Toll Free 1.800.TEX.MOOR

Powered by Our Customers

